

HALL 4

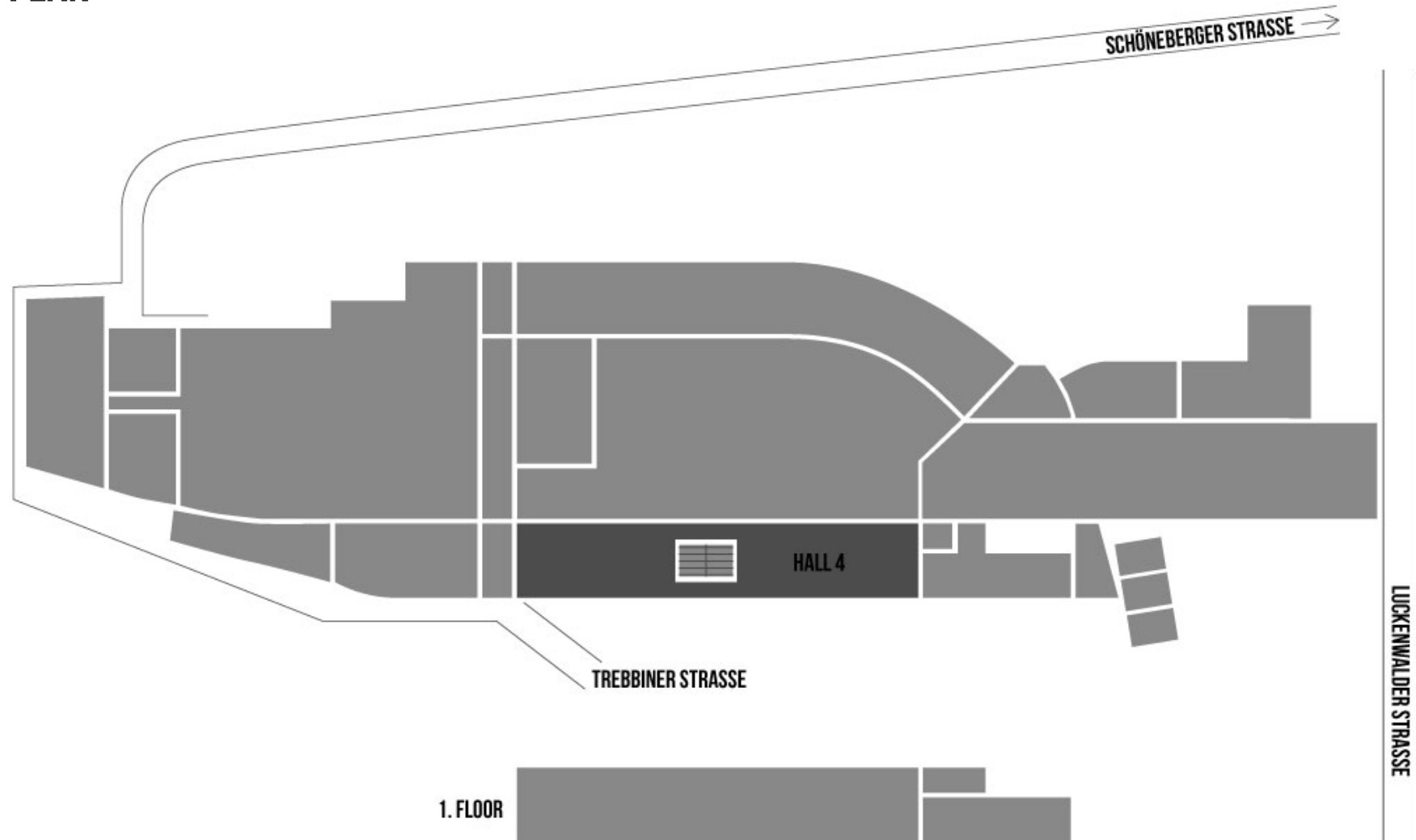
STATION-BERLIN | EIGHT HALLS, 23.000 SQUARE METRES OF SPACE. INFINITE POSSIBILITIES.

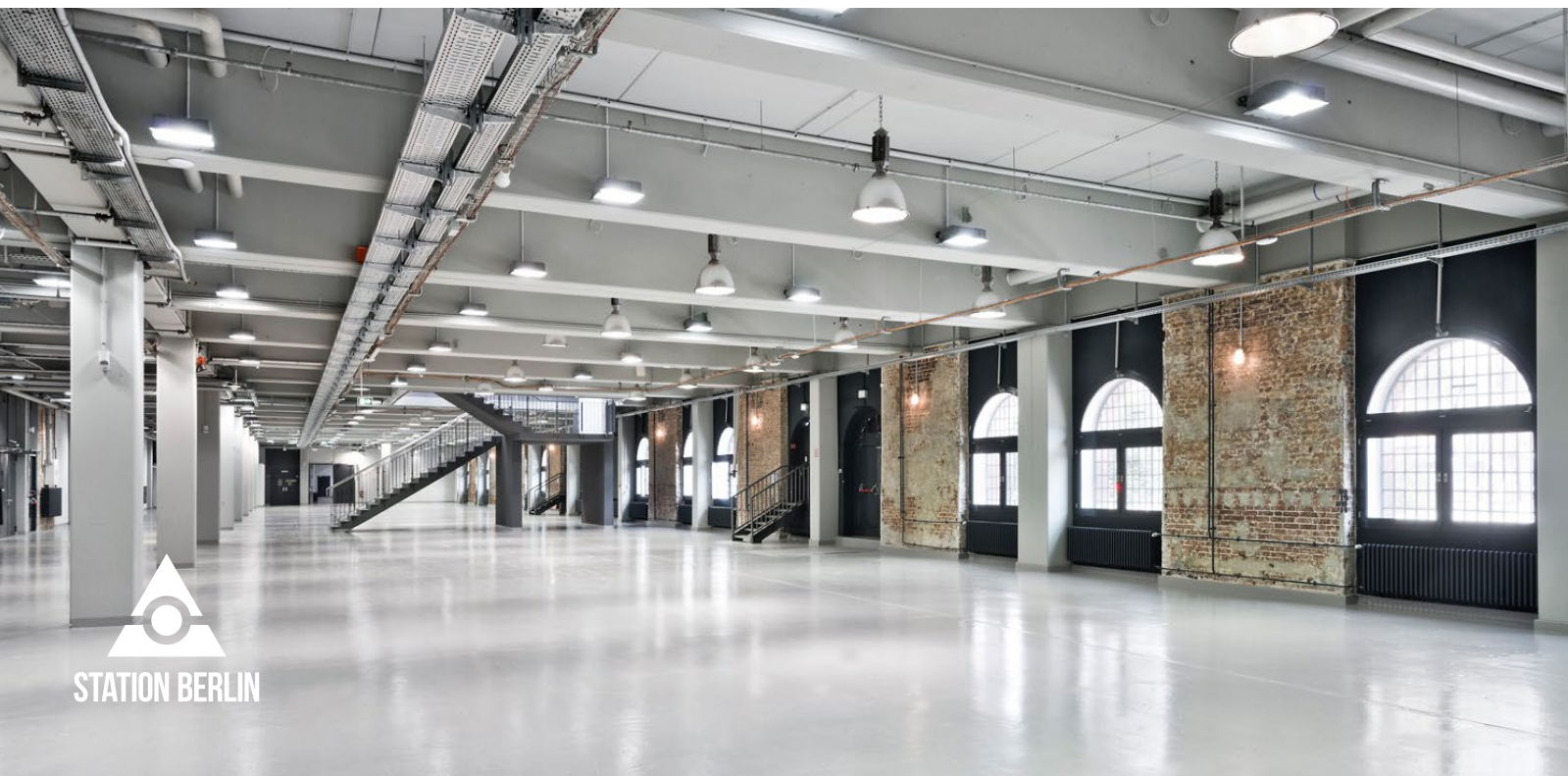


STATION BERLIN

HALL 4

GROUND PLAN





HALL 4

INFO

This hall embodies the principles of minimalism and simplicity.

Whether used individually or as part of a combination, this hall is perfectly suited for conventions, meetings, seminars, workshops, receptions, trade shows and exhibitions.

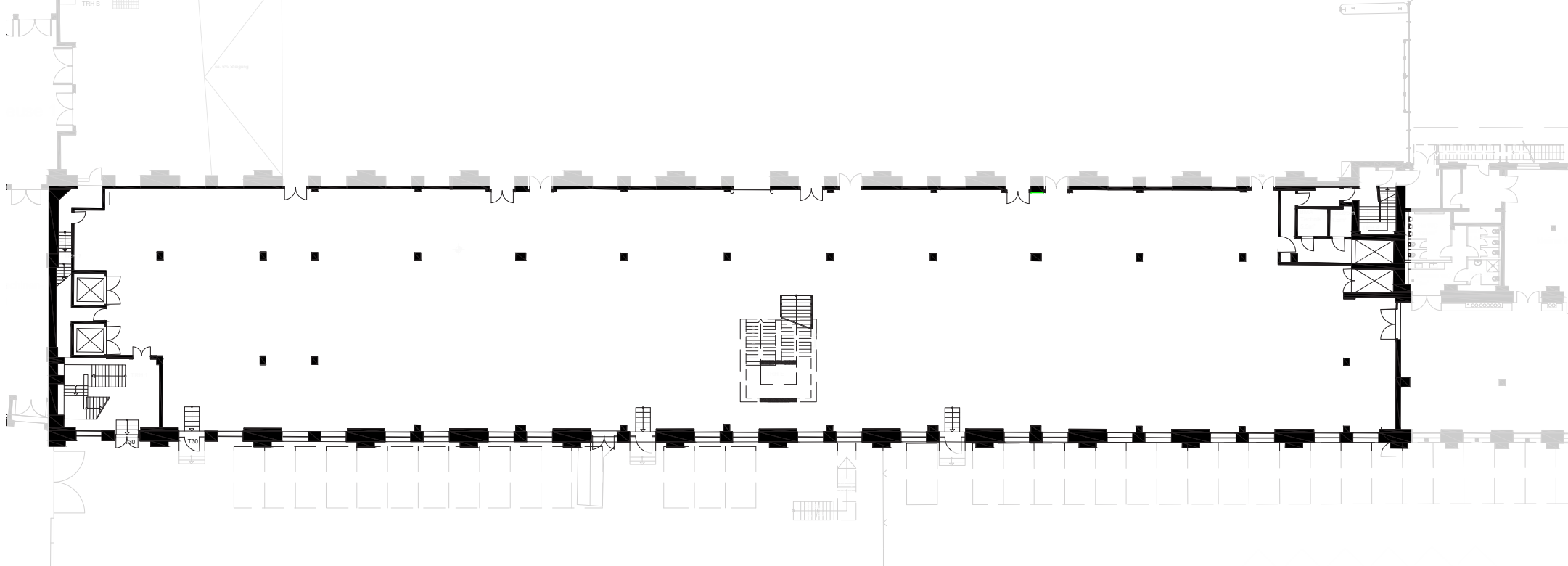


HALL 4

USE

“The Changeable Hall” - with only a little effort, Hall 4 can exude any kind of lighting atmosphere you desire.

At its centre is a majestic staircase that leads upstairs to Hall 5.



HALL 4

FACTS

Floor space	1.950 sqm
Dimensions	105 x 20 m
Clearance height	4,20 m
Lamp height	3,90 m
Beam height	4,15 m
Level	Ground Floor
Barrier-access free	Yes
Disabled toilet	Yes (hall 6)

SEATING*

Row	640 Seats
Banquet	770 Seats
Without seating	900 Standing

*Reference point. The maximum room capacity depends on the specific room concept and has always be considered individually.

OTHER

Power	Yes
Water	Yes
LAN/WiFi	Yes/Yes
Truck/car access (via ramp)	No/Yes
Heating/Cooling	Yes/No
Blackout	Optional